

DT-8823H-E4

Intel 6th/7th/8th/9th Gen Processors with Q170 Chipset based Industrial Machine



Features

- CPU: Intel 6th/7th/8th/9th Gen CPU + Q170
- Memory: Dual channel SO-DIMM DDR4 up to 64 GB
- Display via: 1x HDMI+ 1x VGA + 1x DP
- I/O Interface: 8x USB3.2, 1x USB3.2*Dongle Onboard, 4x USB2.0(2*header), 6x COM, 3xLAN,
- Ethernet: 10/100/1000 Mbps
- Storage: 2x 2.5" HD + M.2 SSD
- Expansion: M.2, PCIe/PCI 4 Slots
- Power: 16-36V DC-in



IoT Solutions
Alliance

Industrial Solution
Builders Specialist

Maxtang[®]

MAXIMIZING YOUR COMPUTING PRODUCTIVITY

Introduction

Maxtang's DT-8823H-E4 fanless embedded industrial PC incorporating the Intel® Core™ 6th/7th/8th/9th Gen processor with Q170, provides a variety of display ports and 16 GPIO, optimizing easy maintenance in industrial automation environments. The series retains the robust design of all Maxtang product lines, at a new extremely cost-effective price point.

The DT-8823H series supports dual-channel DDR4 memory for more powerful computing performance. Along with a versatile I/O array and flexible expansion capacity, the DT-8823H Series fully satisfies all the needs of industrial automation with the performance demanded by vision inspection, motion control, and surveillance applications. Fanless construction not only overcomes contaminant and noise challenges presented by harsh IA environments, the elimination of problematic structural elements that negatively affect MTBF greatly increases lifecycle expectations for the platform.



H/W Monitor



Watchdog

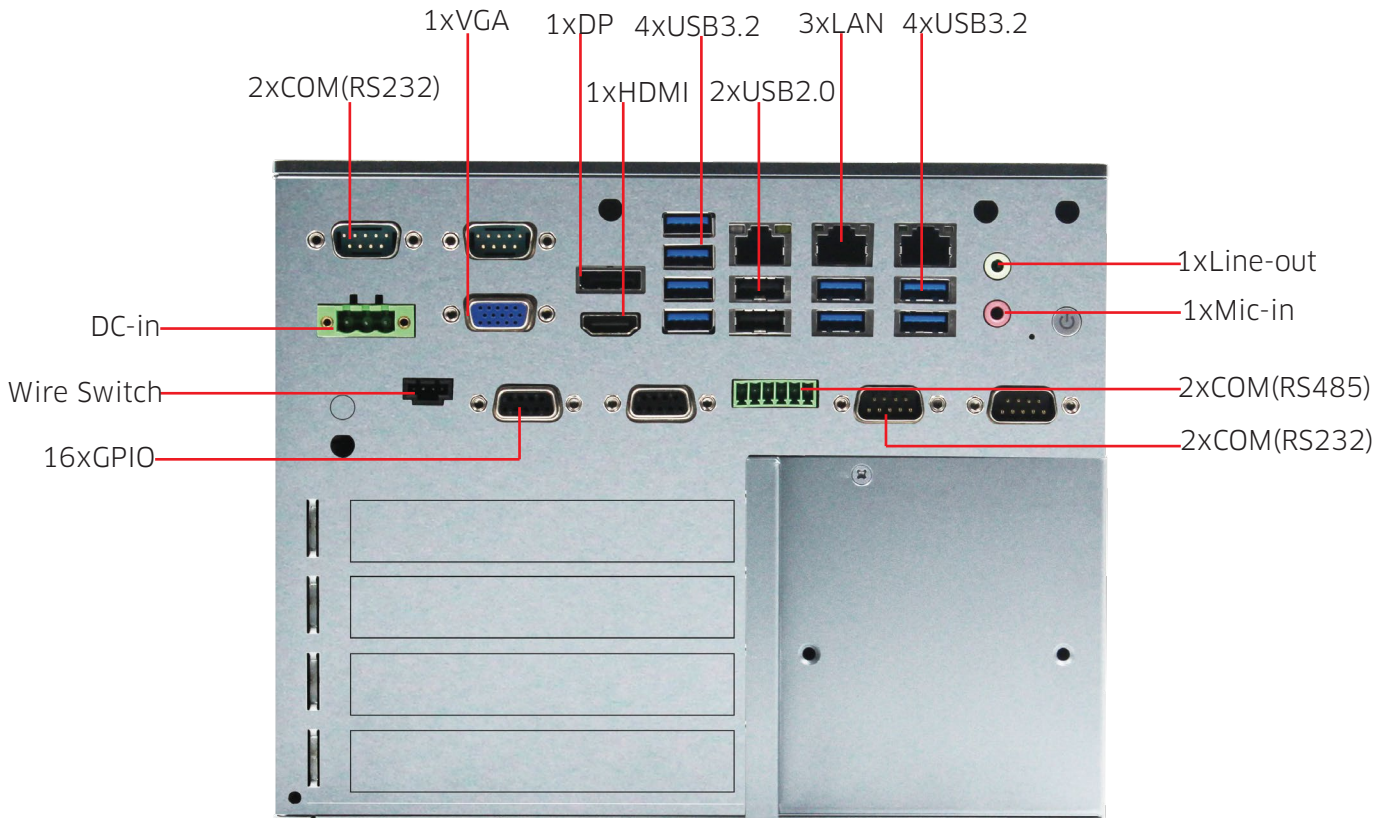


GPIO



Brightness

I/O Interfaces

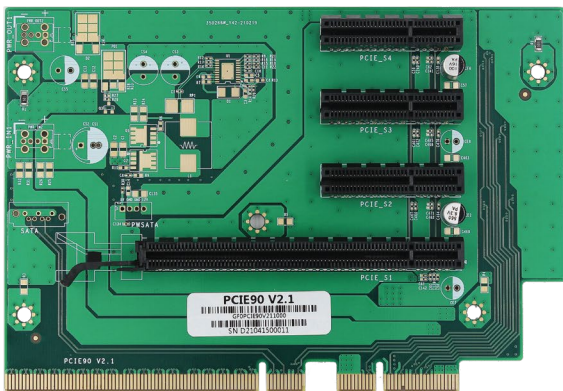


Technical Specifications

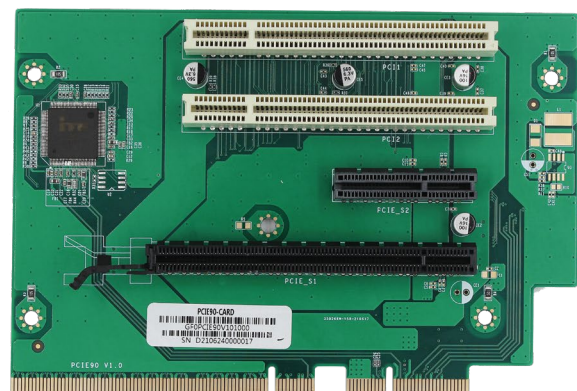
Processor	CPU	Intel 6th/7th/8th/9th Gen Processors (≤ 45W)
Memory	Type	Dual Channel SO-DIMM DDR4
	Max. Capacity	64GB
Display	GPU	Intel HD Graphics based on CPU
	Display via	1xHDMI + 1xVGA+ 1xDP
Ethernet	Speed	10/100/1000 Mbps
	Controller	Intel i211
Storage	SATA	2x SATA 2.5 inches HD
	M.2	1x M.2 for WiFi
	M.2	1x M.2 for 2280 SSD SATA
	M.2	1x M.2 for 4G/5G
Expansion	PCIe/PCI	4 Slots
	Default	1*PCIe8X+2*PCIe4X+1*PCIe2X
	Optional	1*PCIe16X+1*PCIe2X+2*PCI
I/O	USB	2x USB2.0+8x USB3.2 + (1x USB3.2 Dongle OnBoard)+2xUSB2.0Header
	COM	6x COM (4xRS232+2xRS485)
	LAN	3
	HDMI	1
	VGA	1
	DP	1
	Audio	1x Mic-in + 1x Line-out
	GPIO	16x
Other		Wire Switch
Dimension	Size	220 mm x 180 mm x 227.5mm
Power	Standard Port	16-36V DC-in
Temperature	Operating Temp.	0°C to 50°C
	Storage Temp.	-40°C to 85°C
Cooling Method		Passive
Operating System		Windows 7 (6th Gen only), Windows 8.1/10, Linux

* All specifications and photos are subject to change without notice.

PCIe/PCI Expansion Card

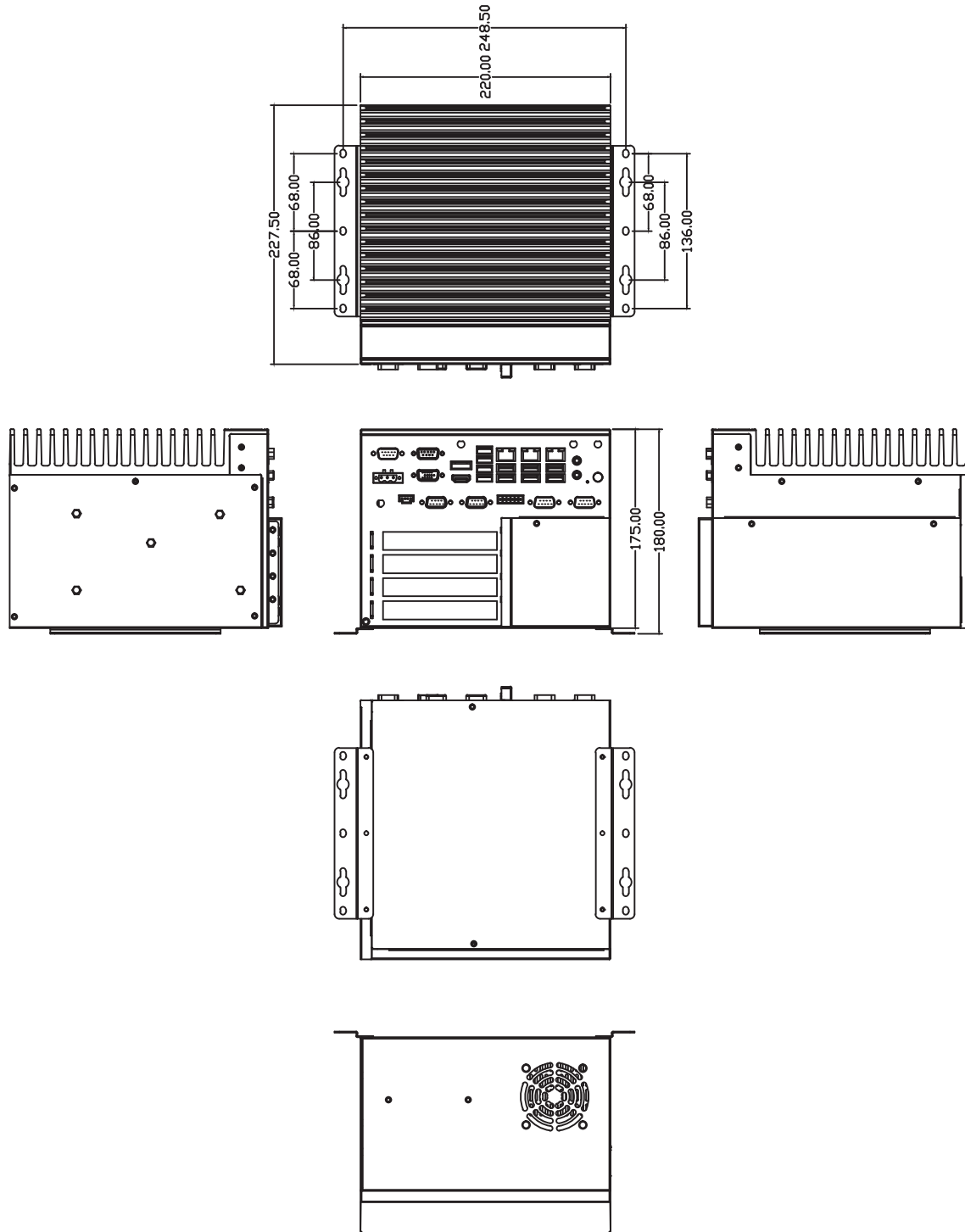


Default



Optional

Block Diagram



Copyright © 2018 Maxtang Technology Co. Ltd. All rights reserved. All data is for information purposes only and not guaranteed for legal purposes. Information has been carefully checked and is believed to be accurate however, no responsibility is assumed for inaccuracies. Maxtang and the Maxtang logo and all other trademarks or registered trademarks are the property of their respective owners and are recognized.